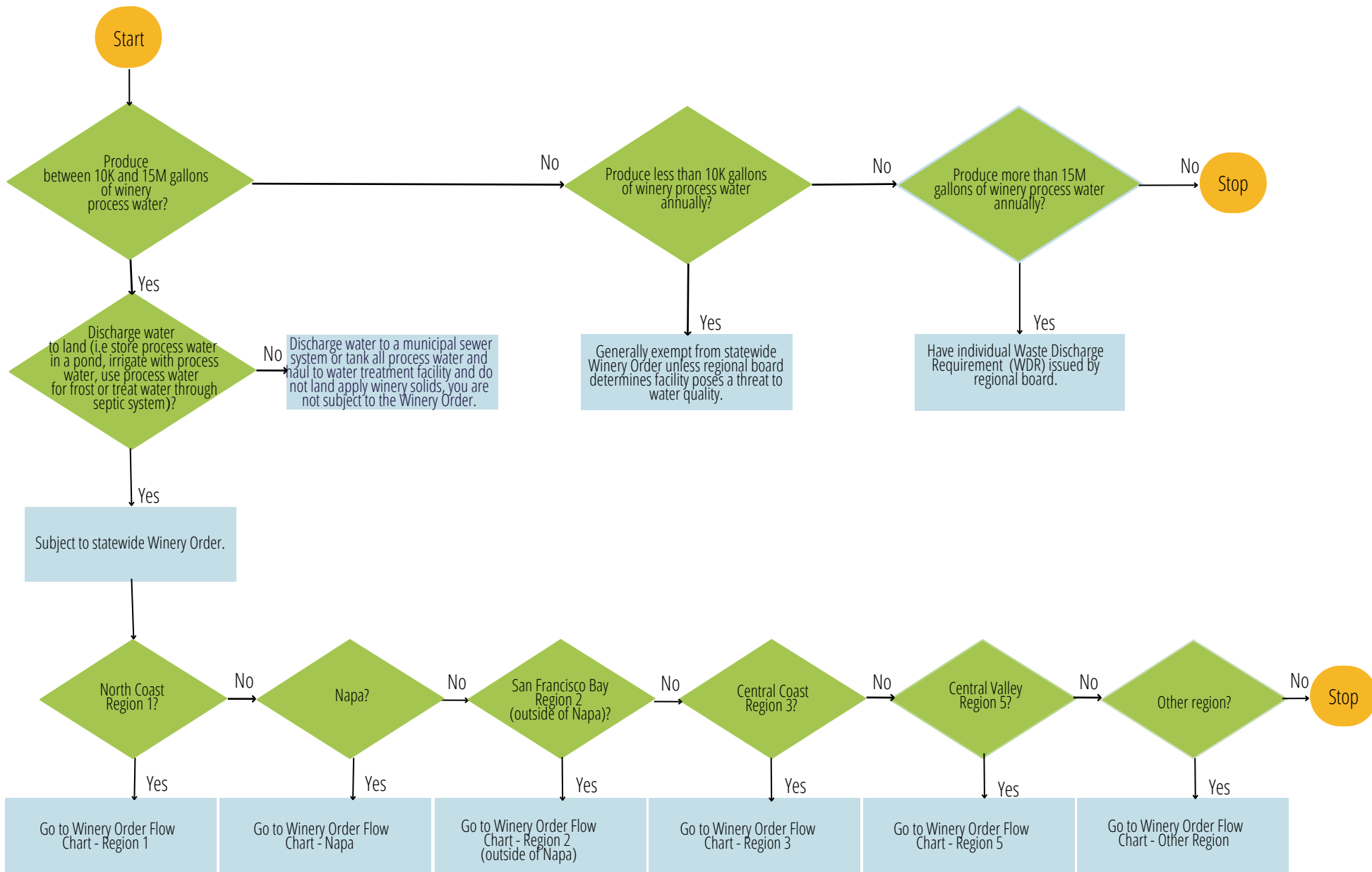
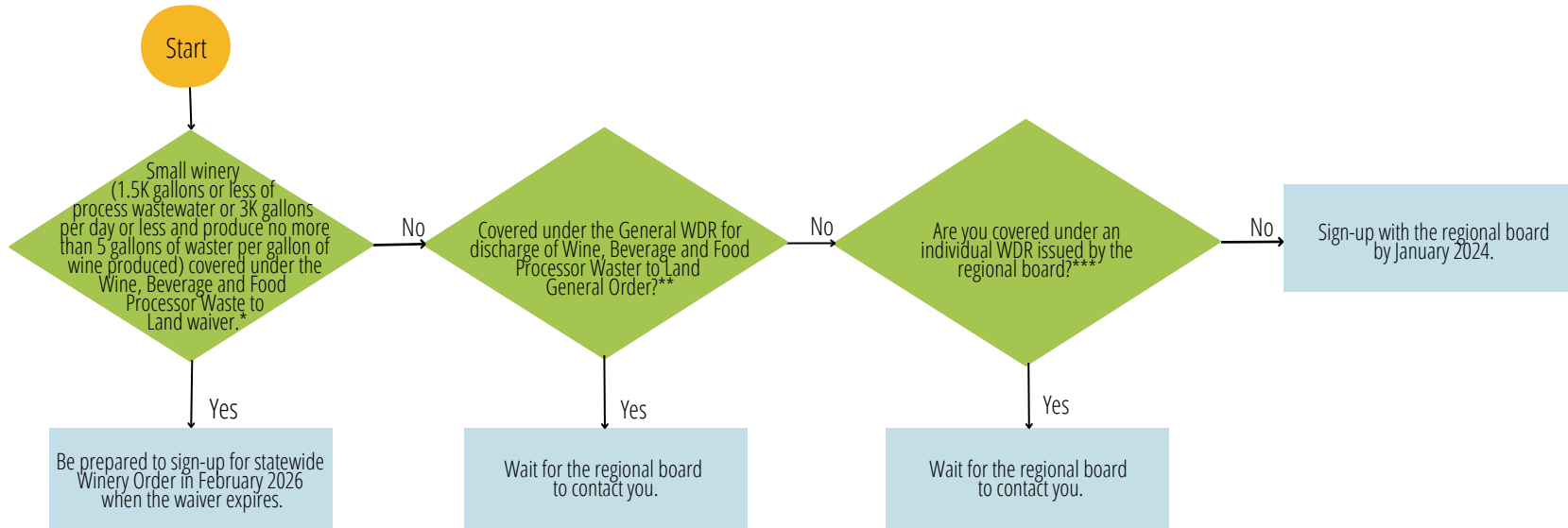


WINERY ORDER FLOW CHART



WINERY ORDER FLOW CHART - NORTH COAST REGION 1



*Adopted Conditional Waiver of Waste Discharge Requirement for Discharges of Wine, Beverage and Food Processor Waste to Land, Order No. R1-2021-0001 or Order No. R1-2022-00311.

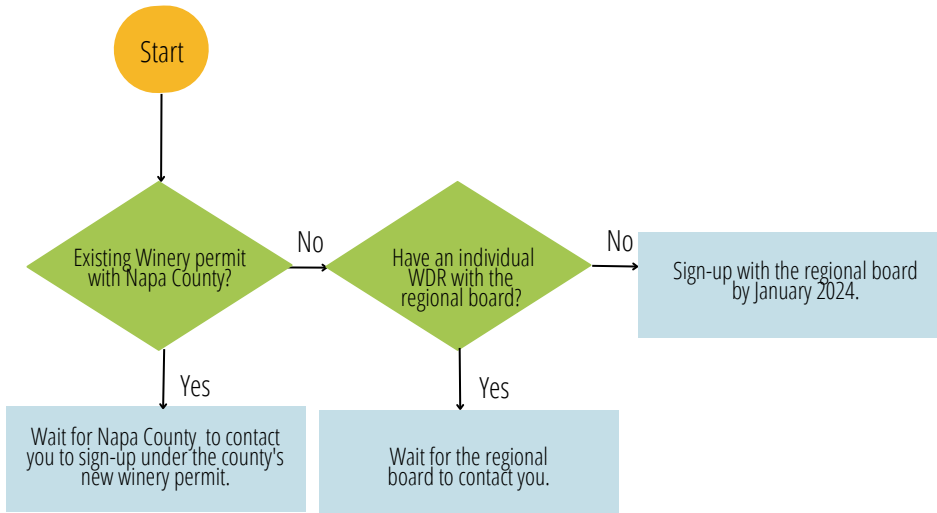
**Adopted General Waste Discharge Requirements for Discharges of Wine, Beverage and Food Processor Waste to Land, Order No. R1-2016-0002 or Order No. R1-2002-0012.

***A permit to operate a septic system does not qualify as a Waste Discharge Requirement (WDR) under this program and wineries will need to enroll in the statewide Winery Order in addition to the septic permit.

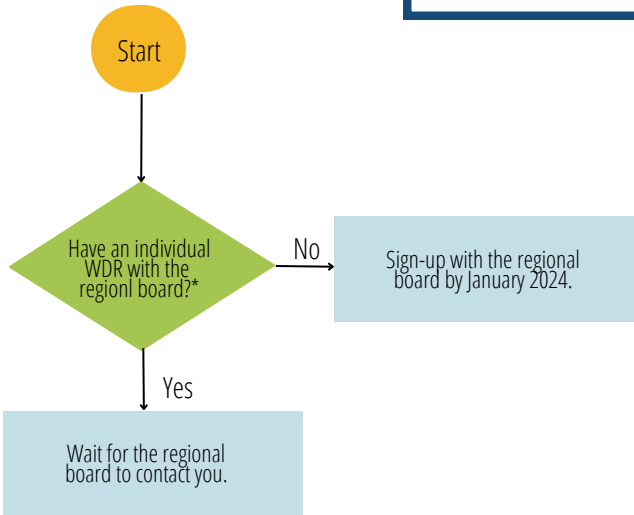
For more information, contact [Noelle Cremers](#).



WINERY ORDER FLOW CHART - NAPA COUNTY



WINERY ORDER FLOW CHART - SAN FRANCISCO BAY REGION 2 (outside Napa County)

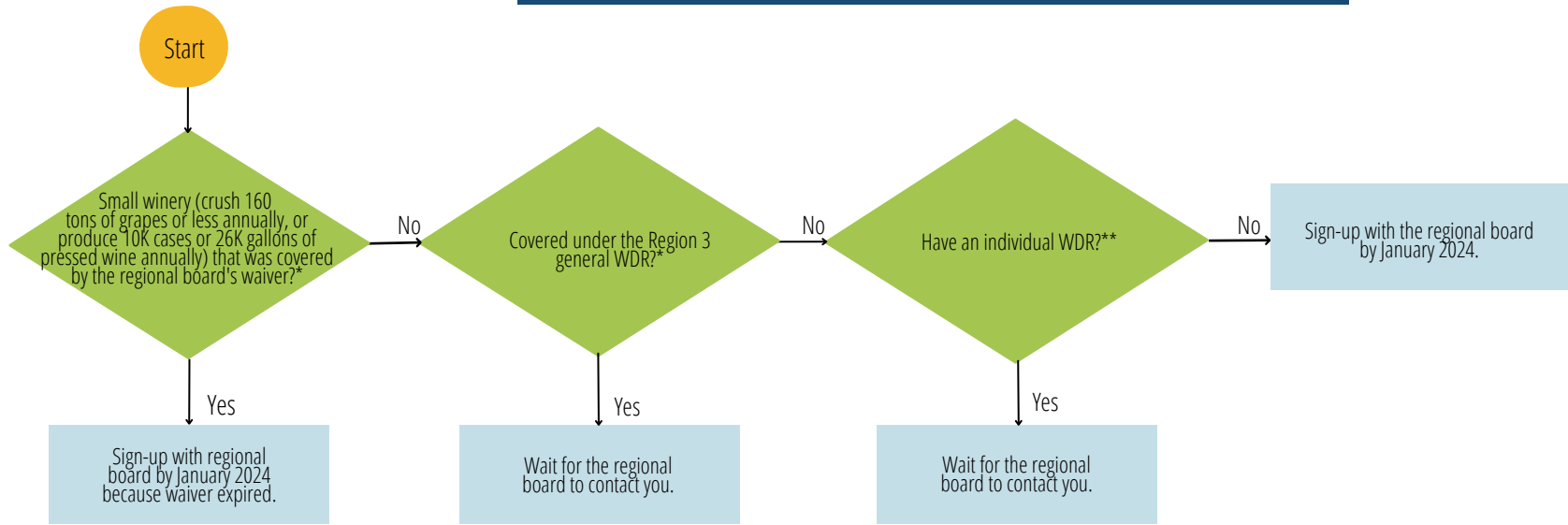


**A permit to operate a septic system does not qualify as a Waste Discharge Requirement (WDR) under this program and wineries will need to enroll in the statewide Winery Order in addition to the septic permit.*

For more information, contact [Noelle Cremers](#).



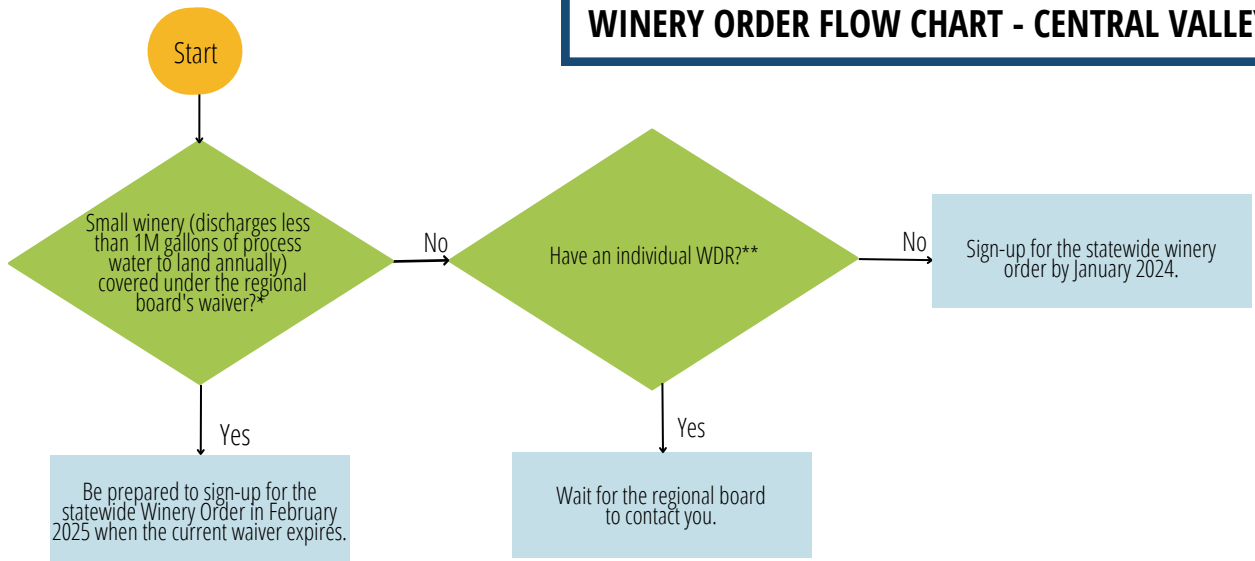
WINERY ORDER FLOW CHART - CENTRAL COAST REGION 3



*General Waste Discharge Requirements for Discharges of Winery Waste and Categorical Waiver of Waste Discharge for Certain Small Wineries, Order No. R3-2017-0020.

**A permit to operate a septic system does not qualify as a Waste Discharge Requirement (WDR) under this program and wineries will need to enroll in the statewide Winery Order in addition to the septic permit.

WINERY ORDER FLOW CHART - CENTRAL VALLEY REGION 5



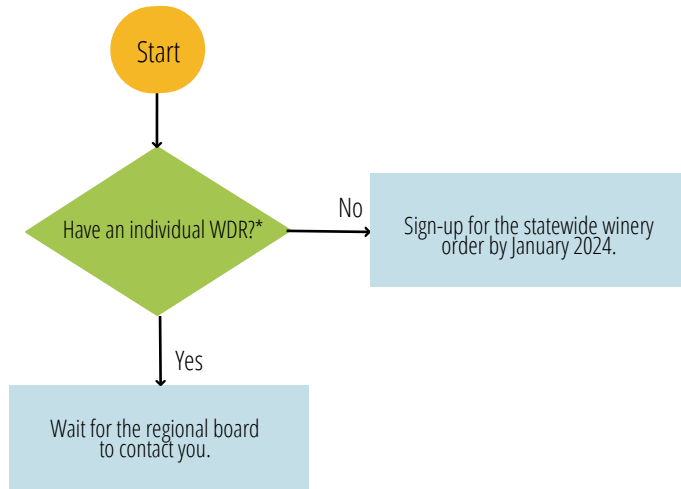
*Waiver of Waste Discharge Requirements for Small Food Processors, Wineries and Regulated Agricultural Processors within the Central Valley Region, Order No. R5-2020-002.

**A permit to operate a septic system does not qualify as a Waste Discharge Requirement (WDR) under this program and wineries will need to enroll in the statewide Winery Order in addition to the septic permit.

For more information, contact [Noelle Cremers](#).



WINERY ORDER FLOW CHART - OTHER REGIONS



**A permit to operate a septic system does not qualify as a Waste Discharge Requirement (WDR) under this program and wineries will need to enroll in the statewide Winery Order in addition to the septic permit.*

For more information, contact [Noelle Cremers](#).

